

ENTERPRISE LEASING

A PORTION OF SECTION 29,
TOWNSHIP 43 SOUTH, RANGE 43 EAST,
PALM BEACH COUNTY, FLORIDA.

118

State of Florida }
County of Palm Beach } SS

THIS PLAT WAS FILED FOR
RECORD AT _____ M.

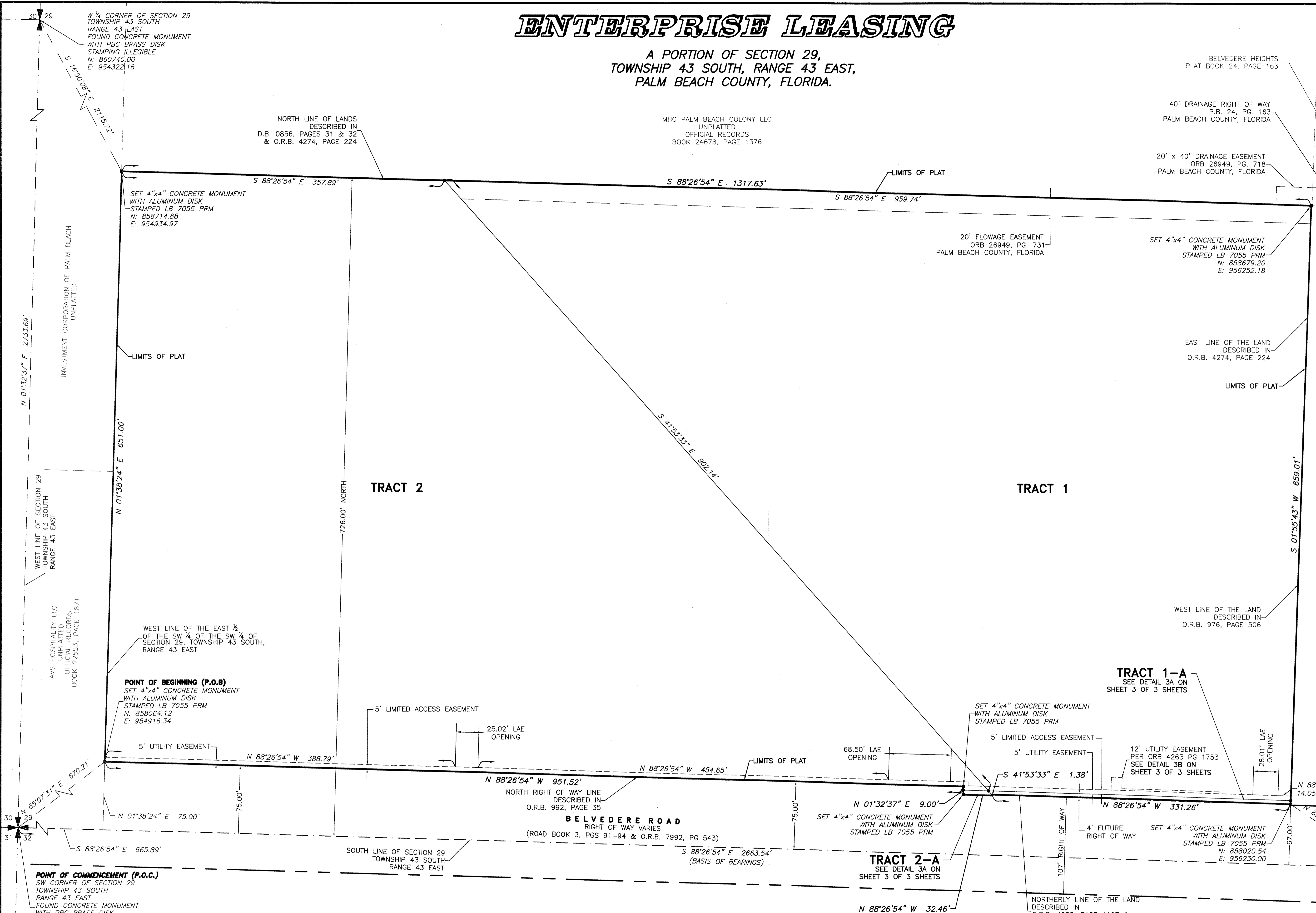
THIS _____ DAY OF _____
A.D. 2014 AND DULY RECORDED

IN PLAT BOOK _____ ON
PAGES _____ THROUGH _____

SHARON R. BOCK
CLERK AND COMPTROLLER

BY: _____
DEPUTY CLERK

SHEET 2 OF 3 SHEETS



W 1/4 CORNER OF SECTION 29
TOWNSHIP 43 SOUTH
RANGE 43 EAST
FOUND CONCRETE MONUMENT
WITH PBC BRASS DISK
STAMPING ILLEGIBLE
N: 880740.00
E: 954322.16

NORTH LINE OF LANDS
DESCRIBED IN
D.B. 0856, PAGES 31 & 32
& O.R.B. 4274, PAGE 224

MHC PALM BEACH COLONY LLC
UNPLATTED
OFFICIAL RECORDS
BOOK 24678, PAGE 1376

BELVEDERE HEIGHTS
PLAT BOOK 24, PAGE 163

40' DRAINAGE RIGHT OF WAY
P.B. 24, PG. 163
PALM BEACH COUNTY, FLORIDA

20' x 40' DRAINAGE EASEMENT
ORB 26949, PG. 718
PALM BEACH COUNTY, FLORIDA

20' FLOWAGE EASEMENT
ORB 26949, PG. 731
PALM BEACH COUNTY, FLORIDA

SET 4"x4" CONCRETE MONUMENT
WITH ALUMINUM DISK
STAMPED LB 7055 PRM
N: 858679.20
E: 956252.18

EAST LINE OF THE LAND
DESCRIBED IN
O.R.B. 4274, PAGE 224

N 1/4 CORNER OF
SECTION 29
TOWNSHIP 43 SOUTH
RANGE 43 EAST
NO MONUMENT FOUND
HELD COR # 054080
N: 863414.23
E: 957095.73

CHEROKEE ACQUISITION CORP
UNPLATTED
OFFICIAL RECORDS
BOOK 21717, PAGE 670

NORTH-SOUTH 1/4 SECTION LINE OF SECTION 29,
TOWNSHIP 43 SOUTH, RANGE 43 EAST

WEST LINE OF SECTION 29
TOWNSHIP 43 SOUTH
RANGE 43 EAST

AVS HOSPITALITY LLC
UNPLATTED
OFFICIAL RECORDS
BOOK 22553, PAGE 1871

WEST LINE OF THE EAST 1/4
OF THE SW 1/4 OF THE SW 1/4 OF
SECTION 29, TOWNSHIP 43 SOUTH,
RANGE 43 EAST

POINT OF BEGINNING (P.O.B)
SET 4"x4" CONCRETE MONUMENT
WITH ALUMINUM DISK
STAMPED LB 7055 PRM
N: 858064.12
E: 954916.34

N 85°07'31" E 670.21'
N 01°38'24" E 75.00'
S 88°26'54" E 665.89'

POINT OF COMMENCEMENT (P.O.C.)
SW CORNER OF SECTION 29
TOWNSHIP 43 SOUTH
RANGE 43 EAST
FOUND CONCRETE MONUMENT
WITH PBC BRASS DISK
STAMPING ILLEGIBLE
N: 858007.18
E: 954248.52

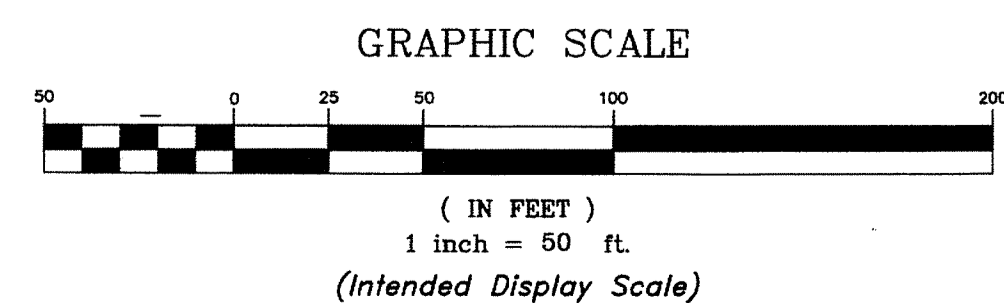
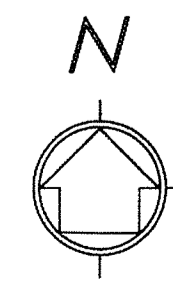
TRACT 2

TRACT 1

TRACT 1-A
SEE DETAIL 3A ON
SHEET 3 OF 3 SHEETS

TRACT 2-A
SEE DETAIL 3A ON
SHEET 3 OF 3 SHEETS

BELVEDERE ROAD
RIGHT OF WAY VARIES
(ROAD BOOK 3, PGS 91-94 & O.R.B. 7992, PG 543)



WGI
Wantman Group, Inc.

Engineering ♦ Planning ♦ Surveying ♦ Environmental
2035 VISTA PARKWAY, SUITE 100, WEST PALM BEACH, FL 33411
(866) 909-2220 phone (561) 687-1110 fax
CERTIFICATE OF AUTHORIZATION No. LB 7055
ORLANDO - PORT ST. LUCIE - TAMPA
THIS INSTRUMENT WAS PREPARED BY ERIC R. MATTHEWS, P.S.M.
PROFESSIONAL SURVEYOR AND MAPPER, LICENSE NO. 6717
FOR THE FIRM: WANTMAN GROUP, INC.